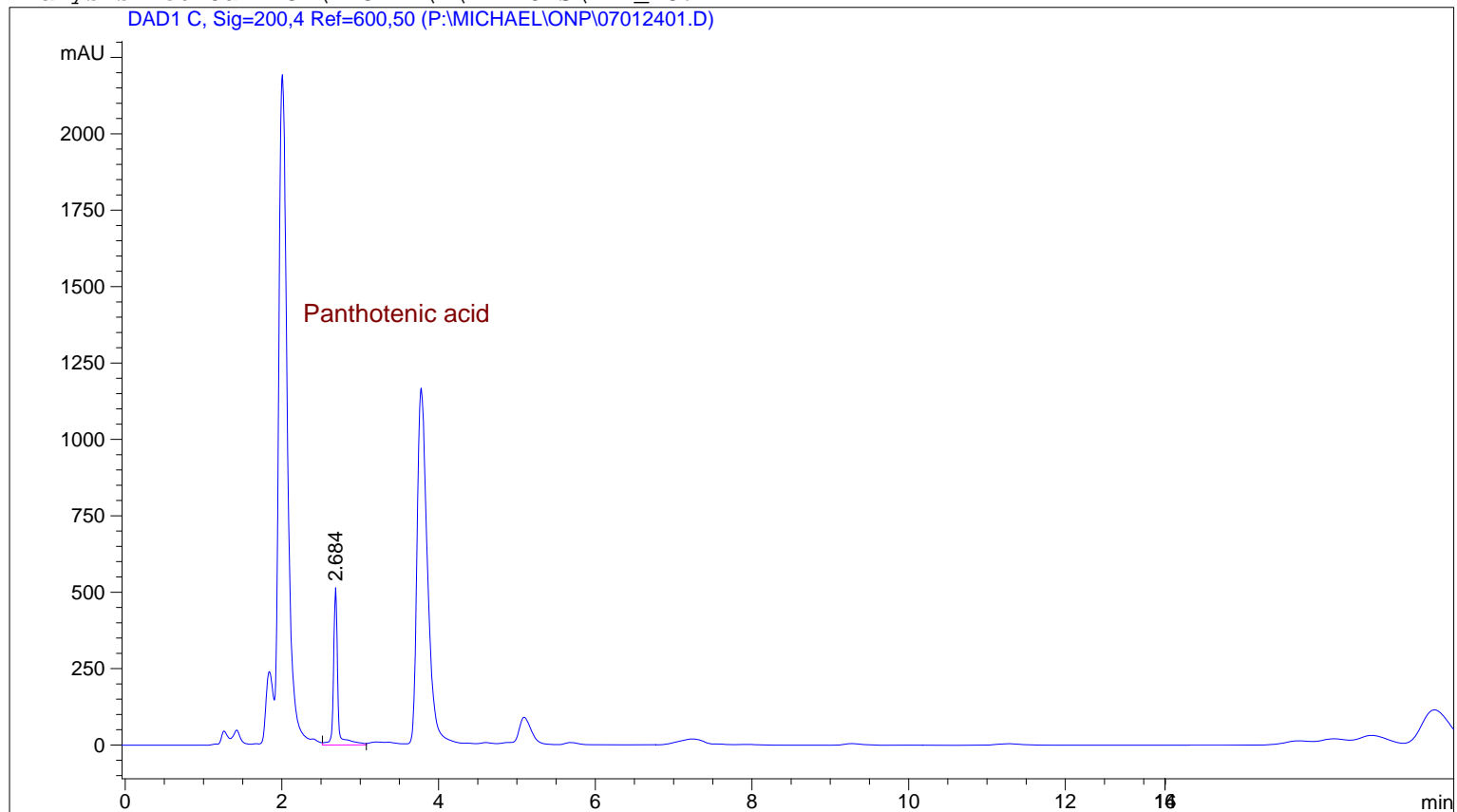


7012301 Vitagil Türkei Chr.: 7010061

```
=====
Injection Date   : 24.01.2007 14:39:18          Seq. Line   :    1
Sample Name     : VA-01                        Location    : Vial 1
Acq. Operator  : Guggemos                      Inj         :    1
Acq. Instrument : HPLC1100                     Inj Volume  : 25 µl
Acq. Method    : D:\HPCHEM\1\METHODS\VITB1.M
Last changed   : 24.01.2007 14:37:11 by Guggemos
Analysis Method : C:\HPCHEM\1\METHODS\DEF_IC.M
=====
```



```
=====
                          Area Percent Report
=====
```

```
Sorted By           :      Signal
Multiplier          :      1.0000
Dilution           :      1.0000
```

Signal 1: DAD1 C, Sig=200,4 Ref=600,50

Peak #	RetTime [min]	Type	Width [min]	Area [mAU*s]	Height [mAU]	Area %
1	2.684	VV	0.0585	1969.48083	516.29956	100.0000

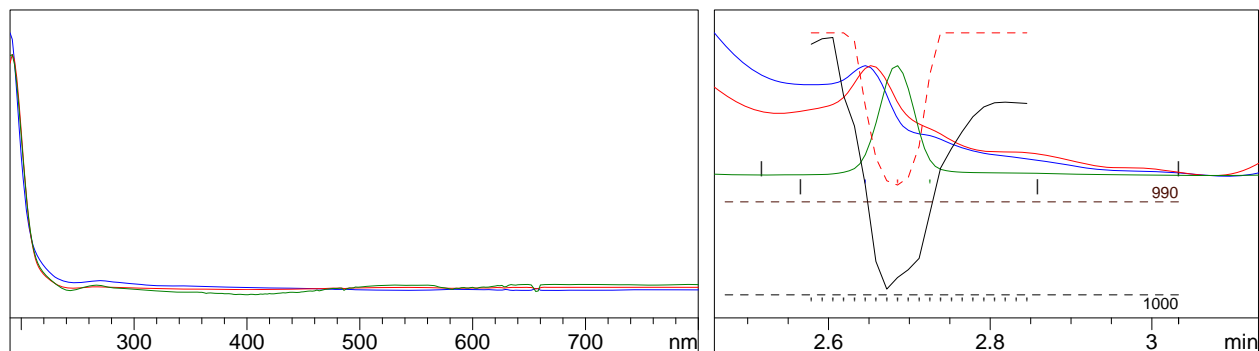
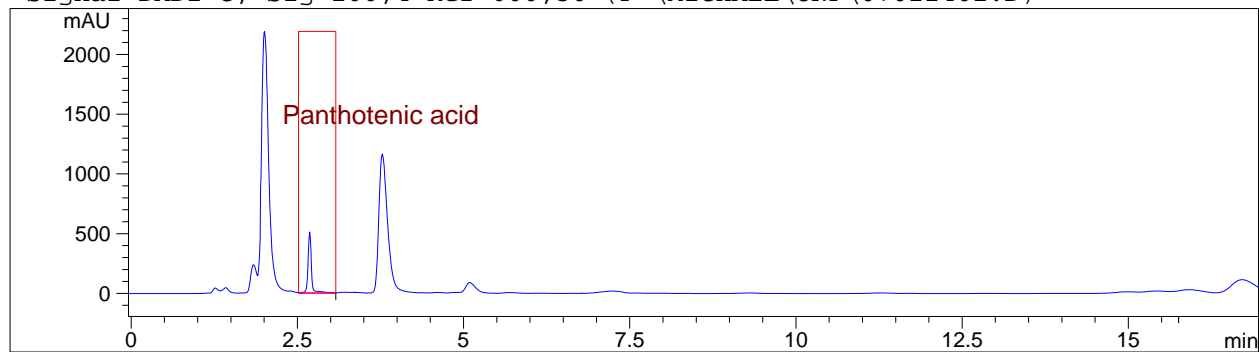
```
Totals :                      1969.48083  516.29956
```

Results obtained with enhanced integrator!

```
=====
*** End of Report ***
```

Purity results peak 1 at 2.684 min.

Signal DAD1 C, Sig=200,4 Ref=600,50 (P:\MICHAEL\ONP\07012401.D)



-> The purity factor is within the calculated threshold limit. <-

Purity factor : 820.892 (21 of 21 spectra are within the calculated threshold limit.)  
Threshold : 313.952 (Calculated with 21 of 21 spectra)  
Reference : Peak start and end spectra (integrated) (2.565 / 2.859)  
Spectra : 3 (Selection automatic, 3)  
Noise Threshold: 7.386 (12 spectra, St.Dev 2.1169 + 3 \* 1.7565)

\*\*\* End of Report \*\*\*

